



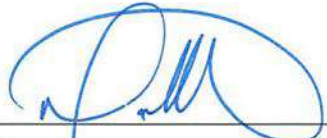
MAGHTAB ENVIRONMENTAL COMPLEX

EMERGENCY RESPONSE PLAN

Prepared by:


Stefan Salomone
Senior Manager – Health & Safety

Reviewed by:


Nathan Gatt
Plant Engineer

Reviewed by:


Robert Micallef
Works Manager

Reviewed by:


Karl Mizzi
Plant Engineer

Reviewed by:


Andrea Brincat
Chief Operations Officer

Approved by:


Tonio Montebello
Chief Executive Officer

Date:

24.10.18

Copyright of this document and its contents rests solely with WasteServ Malta Ltd. Unauthorised reproduction of this document or communication of its contents to third parties, without written permission, is strictly forbidden. This confidential document may be passed to third parties only under written instructions from the Directors of WasteServ Malta Ltd. Users/receivers of such documentation are still bound by confidentiality if these documents are in their possession. Any third parties, divulging information from this document, without the written consent of the Directors of WasteServ Malta Ltd will be prosecuted.

1 CHANGE HISTORY

Rev No.	Description of Change	Date
0	First issue	28.02.2016
1	Update of actions to be taken during an emergency. Included Malta-North facility. Included contact numbers, location of equipment, and other important information as Appendices.	08.06.2018

2 TABLE OF CONTENTS

1	CHANGE HISTORY	2
2	TABLE OF CONTENTS	3
3	LIST OF APPENDICES.....	4
4	INTRODUCTION	5
4.1.	AIMS.....	7
4.2.	LIMITATIONS.....	7
4.3.	NOTES.....	7
5	DEFINITIONS	8
5.1.	EMERGENCY RESPONSE TEAM	8
5.2.	TRAFFIC CONTROL	8
5.3.	ASSEMBLY POINT	8
5.4.	STAFF.....	8
5.5.	CHIEF OFFICER STRATEGY AND IMPLEMENTATION	8
5.6.	CONTRACTORS	8
5.7.	VULNERABLE PERSONS.....	9
5.8.	CIVIL PROTECTION DEPARTMENT (CPD)	9
5.9.	OCCUPATIONAL HEALTH & SAFETY AUTHORITY (OHSA)	9
5.10.	ENVIRONMENT AND RESOURCES AUTHORITY (ERA)	9
5.11.	FIRE AND/OR EXPLOSION.....	9
5.12.	MAJOR INJURY	9
5.13.	MAJOR SPILL	10
6	ACTIONS TO BE TAKEN	11
6.1.	FIRE – MALTA-NORTH	11
6.2.	FIRE – LANDFILL AND RTO GAS PLANT	13
6.3.	INJURY.....	14
6.4.	SPILL.....	15
6.5.	LIST OF PERSONNEL TO BE KEPT ON SITE	16
7	NOTIFICATIONS.....	17

3 LIST OF APPENDICES

Appendix I	Controlled Document 108a Contact Numbers
Appendix II	Controlled Document 108b MN Fire Safety Drawings
Appendix III	Controlled Document 108c Emergency Equipment
Appendix IV	Controlled Document 108d Chemicals
Appendix V	Controlled Document 108e ATEX Zones

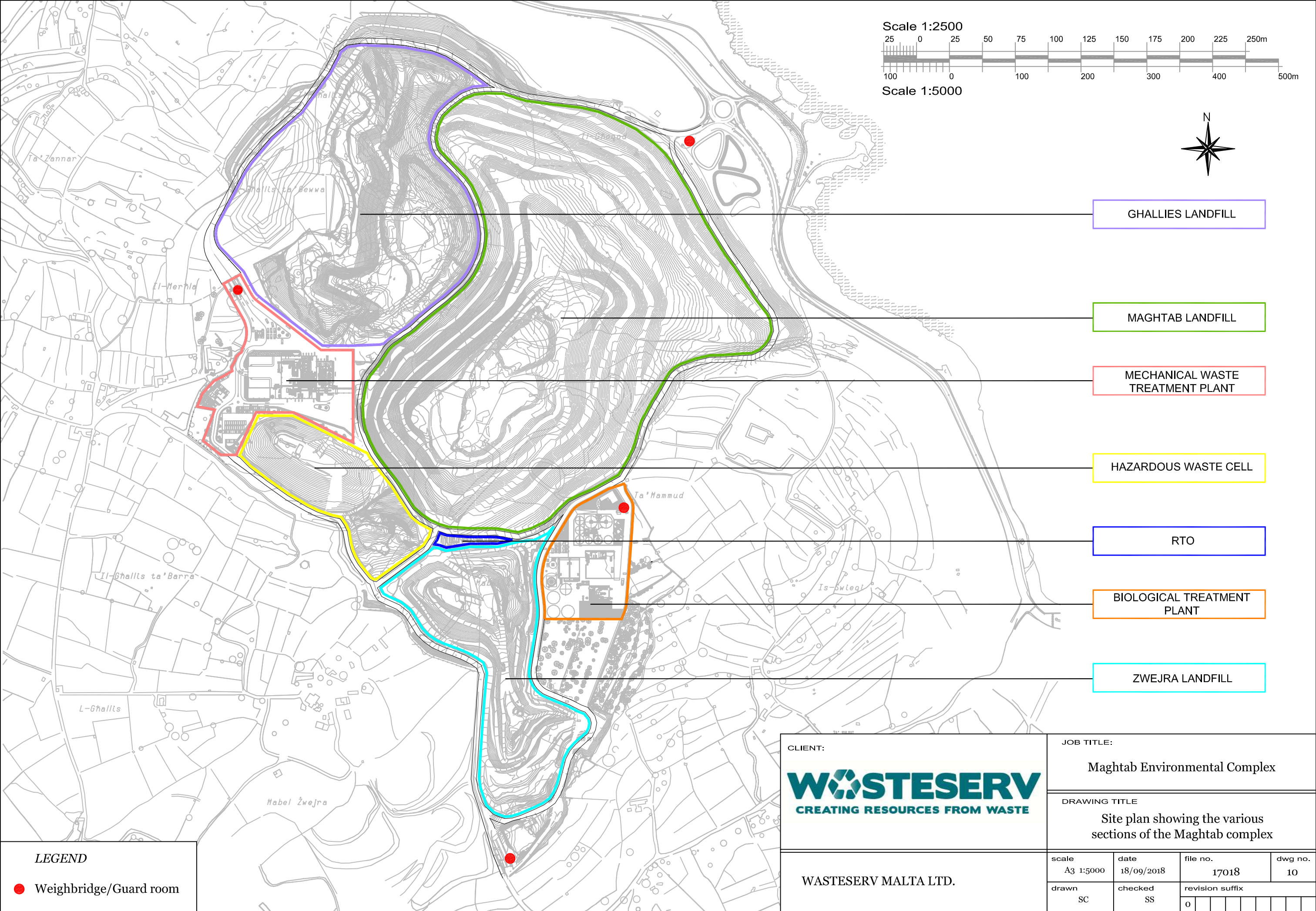
4 INTRODUCTION

The plan is intended to set up standard procedures in the event of emergencies, allocating responsibilities and the immediate action to be taken in the event of fire, injury, and oil or chemical spill, in order to minimise the consequences of any incident. This plan meets the requirements for contingency planning as required by LN37 of 2003, as amended by Legal Notices 6 of 2005 and LN4 of 2014 (Article 30 of Directive 2012/18/EU of the European Parliament and of the Council amending Council Directive 96/82/EC on the control of major-accident hazards involving dangerous substances).

The plan will ensure that all efforts are co-ordinated through one point and to a common aim. For the purposes of this plan, the Maghtab Environmental Complex will be separated into three (3) distinct areas as follows:

1. Ghallis, Zwejra and Maghtab Landfill, the RTO Gas Plant, and the hazardous cell
2. Malta-North Mechanical Waste Treatment Plant
3. Malta-North Biological Waste Treatment Plant

The location of each of the above areas can be found in site plan overleaf.



4.1. Aims

- Ensuring safety of persons (plant personnel, public, and response personnel).
- Minimising or avoiding damage to plant, third party property and to the environment.
- Minimising or avoiding financial loss.

4.2. Limitations

The scope of this plan is limited to fire, major injury, and major chemical spills and will be implemented as determined by the Emergency Controller. However the principles involved are adaptable to other emergencies.

4.3. Notes

This plan has been distributed to the following authorities:

- Environment and Resources Authority (ERA)
- Occupational Health & Safety Authority (OHSA)
- Civil Protection Department (CPD)

Controlled copies of this document shall be made available at the new and old Weighbridge, and at the AD Guard Room.

5 DEFINITIONS

5.1. Emergency Response Team

The **Emergency Response Team (ERT)** shall be made up of a group of key employees selected in accordance to their role and/or their physical location within the company. All members of the ERT shall receive adequate training in their role.

The **ERT (Affected Area)** is the member of the ERT who is closest to the area where the emergency occurred.

5.2. Traffic Control

In case of emergencies, no vehicles will be allowed to enter or leave the site unless this is necessary to make way for emergency services to enter the facility.

This task will be handled by the **Weighbridge Operators / Security**.

5.3. Assembly Point

The Assembly Points for the Maghtab Environmental Complex are located as follows:

- Ghallis, Zwejra and Maghtab Landfill and RTO Gas Plant – near the power wash station
- Malta-North Mechanical and Biological Waste Treatment Plant – near the new Weighbridge
- Malta-North Anaerobic Digestion Plant – outside the AD guard room

The Assembly Points are clearly indicated with a green sign and wording '*Assembly Point*'.

5.4. Staff

All personnel not forming part of the **Emergency Response Team**.

5.5. Chief Officer Strategy and Implementation

In case of an emergency situation, communications with the media and the general public will be handled by the **Chief Officer Strategy and Implementation (COSI)** only.

In addition to the **COSI**, the **Company Secretary** is to be informed of the incident/emergency as soon as possible.

5.6. Contractors

Contractors working on-site must be briefed on safety procedures on their first day at the facility and prior to start working.

5.7. Vulnerable persons

Vulnerable persons are those persons who are at more risk than others in cases of an emergency. This includes but is not limited to visitors, young persons, pregnant or breastfeeding workers, persons with different abilities, and injured persons.

The ERT must ensure the safety of any vulnerable persons within their area of control by assigning personnel to assist them throughout the emergency.

5.8. Civil Protection Department (CPD)

The Civil Protection Department (CPD) are responsible for fire fighting and rescue operations, emergency planning and handling of major incidents.

CPD can be contacted through the general emergency number:

Emergency: 112

5.9. Occupational Health & Safety Authority (OHSA)

The OHSA is the local Authority for all Health & Safety matters. The authority must be alerted to any serious incident at COMAH sites, injuries to workers. The OHSA is the competent authority for safety matters such as testing of boilers, cranes etc.

5.10. Environment and Resources Authority (ERA)

ERA is responsible for general environmental issues. The authority must be informed by the Technical Competent Person in case of fire and/or any spills reaching sewer, road, soil and/or sea.

5.11. Fire and/or Explosion

A fire or explosion could generate highly toxic or corrosive fumes. Flying debris might result from explosions or compressed gas cylinder failure. Process system disruption, loss of plant control, and breach of process system boundaries could result from the flying debris. In addition, heavy smoke could disrupt the operation of the ventilation system.

5.12. Major Injury

A major injury is an injury which results in one or more of the following:

- fracture of the skull, spine or pelvis;
- fracture of any bone other than the wrist or ankle;
- amputation of a hand or foot;
- the loss of sight of an eye; or
- any other injury which results in the person injured being detained in hospital for more than twenty-four hours other than for observation.

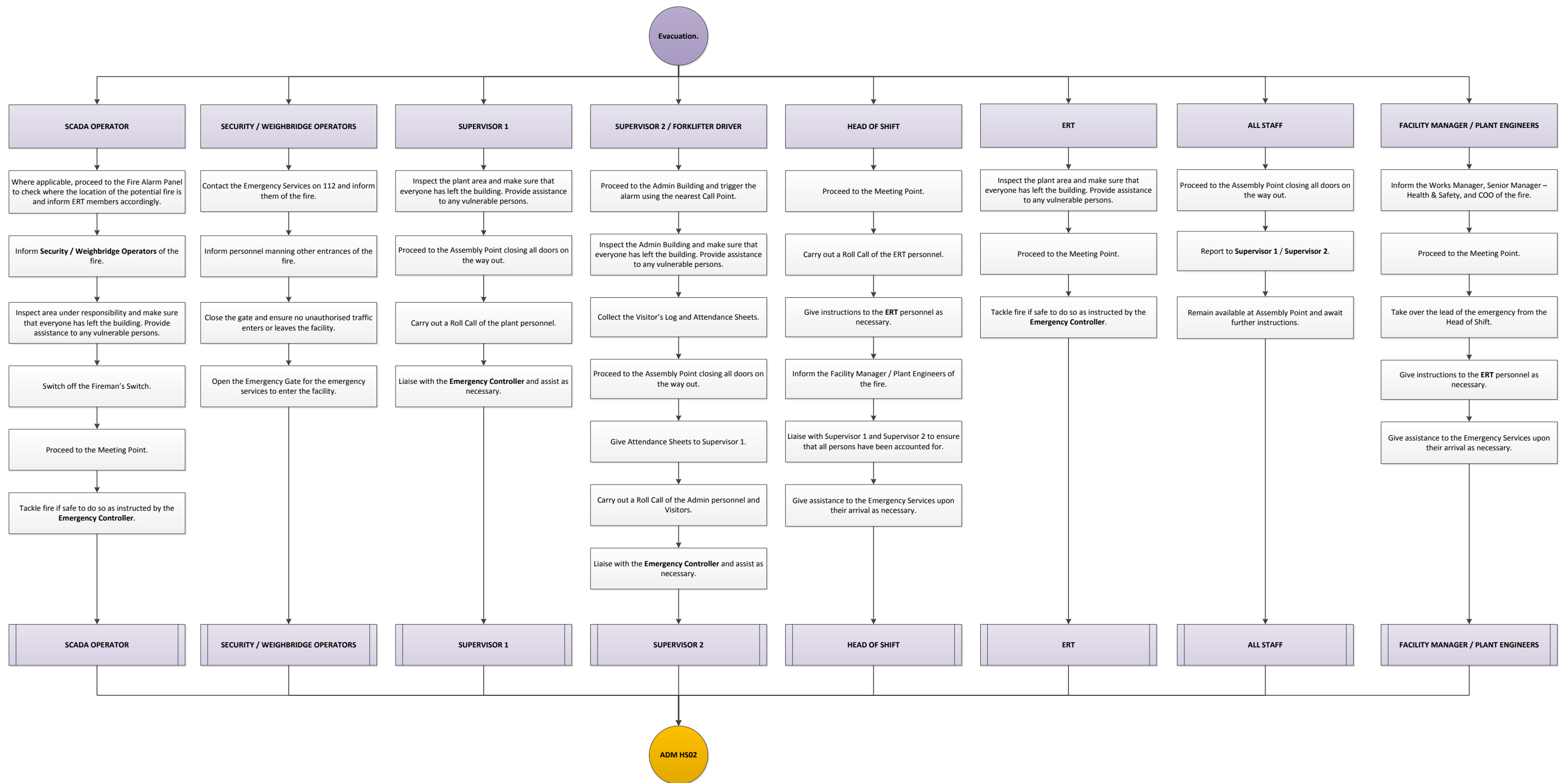
5.13. Major Spill

A major spill is a spill of a chemical exceeding 10L.

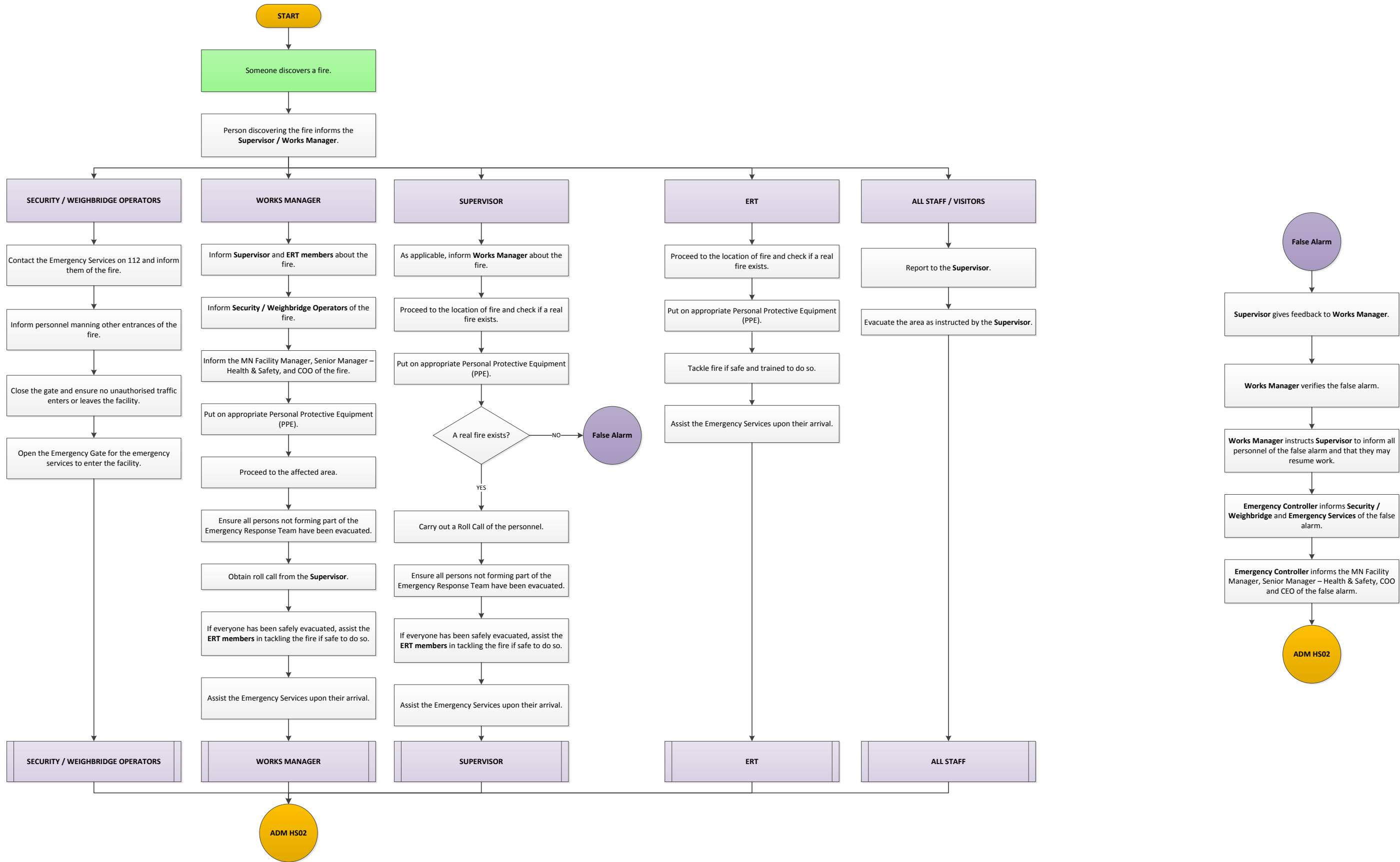
6 ACTIONS TO BE TAKEN

6.1. Fire – Malta-North

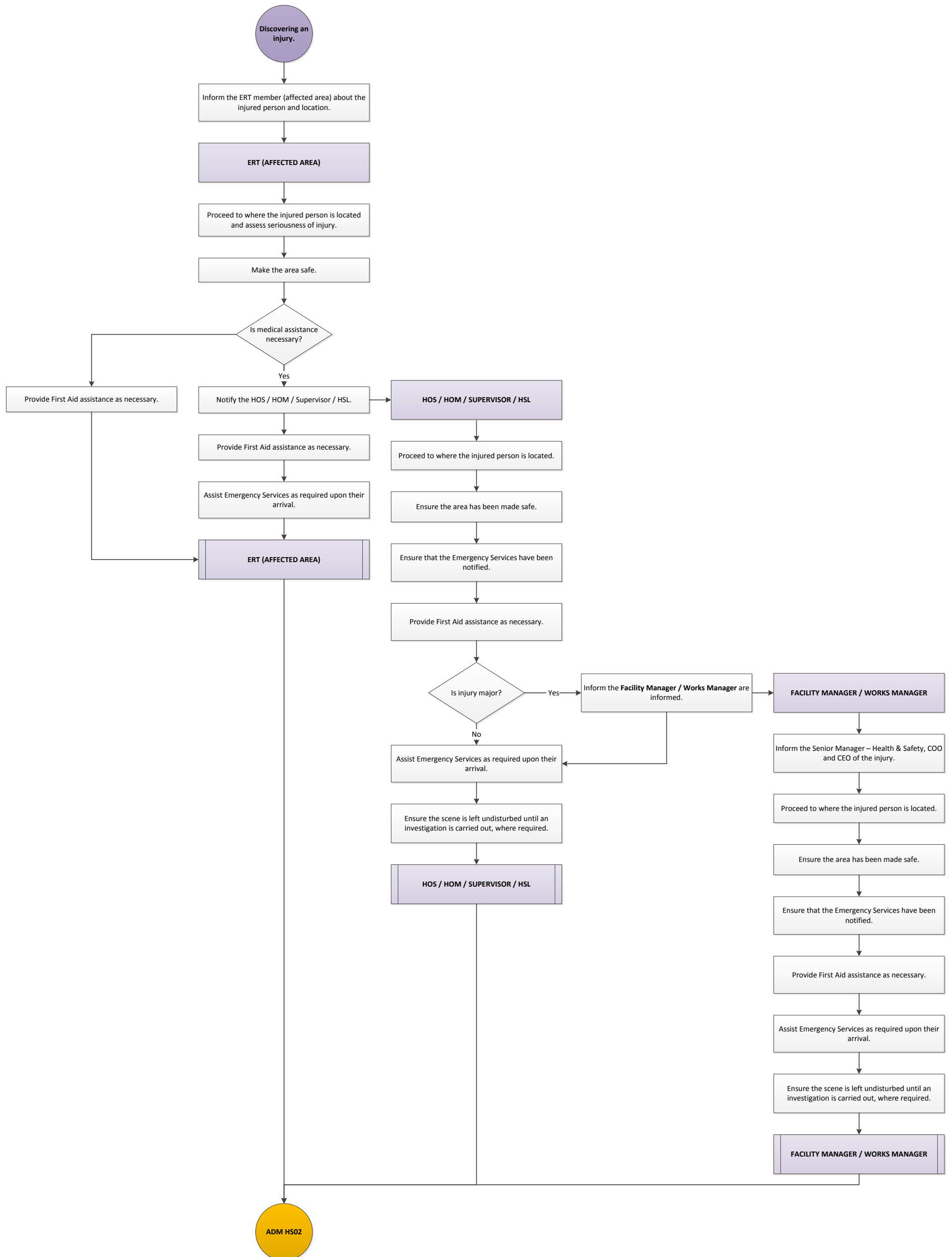




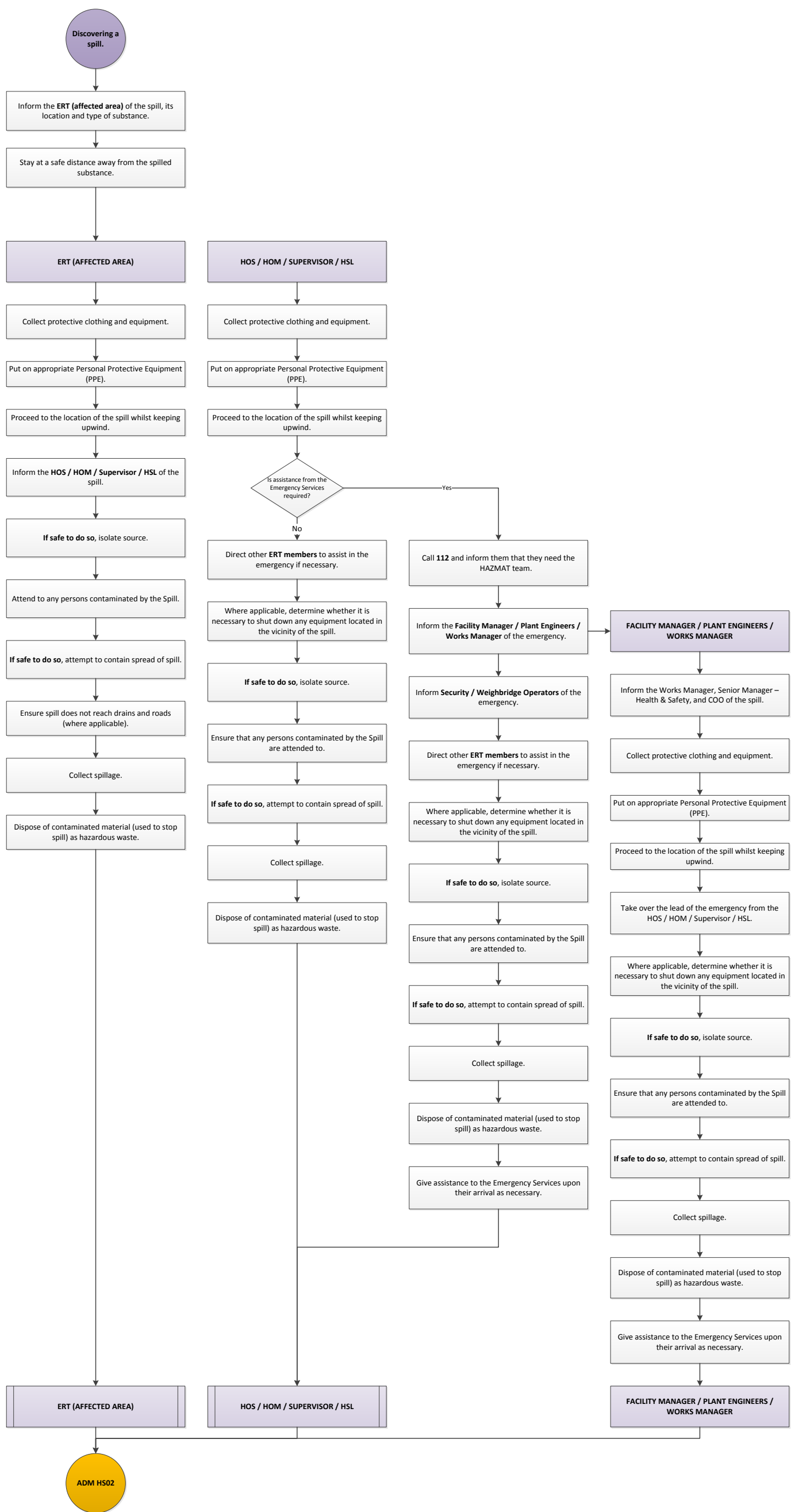
6.2. Fire – Landfill and RTO Gas Plant



6.3. Injury



6.4. Spill



6.5. List of personnel to be kept on site

- Members of the Emergency Response Team
- Security personnel (including Head of Security)
- Storekeeper/s
- Driver/s
- Cleaner/s

7 NOTIFICATIONS

The table below shows the list of personnel and agencies/authorities that must be notified of incidents or emergency situations. Phone numbers are listed in Appendix II for ease of reference. Verbal notifications must be followed by a written report.

	Fire	Injury	Spill
Supervisor / Head of Shift	✓	✓	✓
Facility Manager / Plant Engineers / Works Manager	✓	✓	✓
Chief Operations Officer (COO)	✓	1	✓
Senior Manager – Health & Safety	✓	✓	✓
ERA	✓		2
Occupational Health & Safety Authority (OHSA)		1	
Police		1	
Transport Malta (TM)			2
Water Services Corporation (WSC)			3

Note:

[1] Notify only if injury is major.

[2] Notify if spill reaches land (including unlined cells), road and/or sea.

[3] Notify if spill reaches the drains.

As per internal procedure, incidents and/or accidents must be reported to direct superior and/or management.

The management shall in turn notify the governing authority of the incidents or accidents.